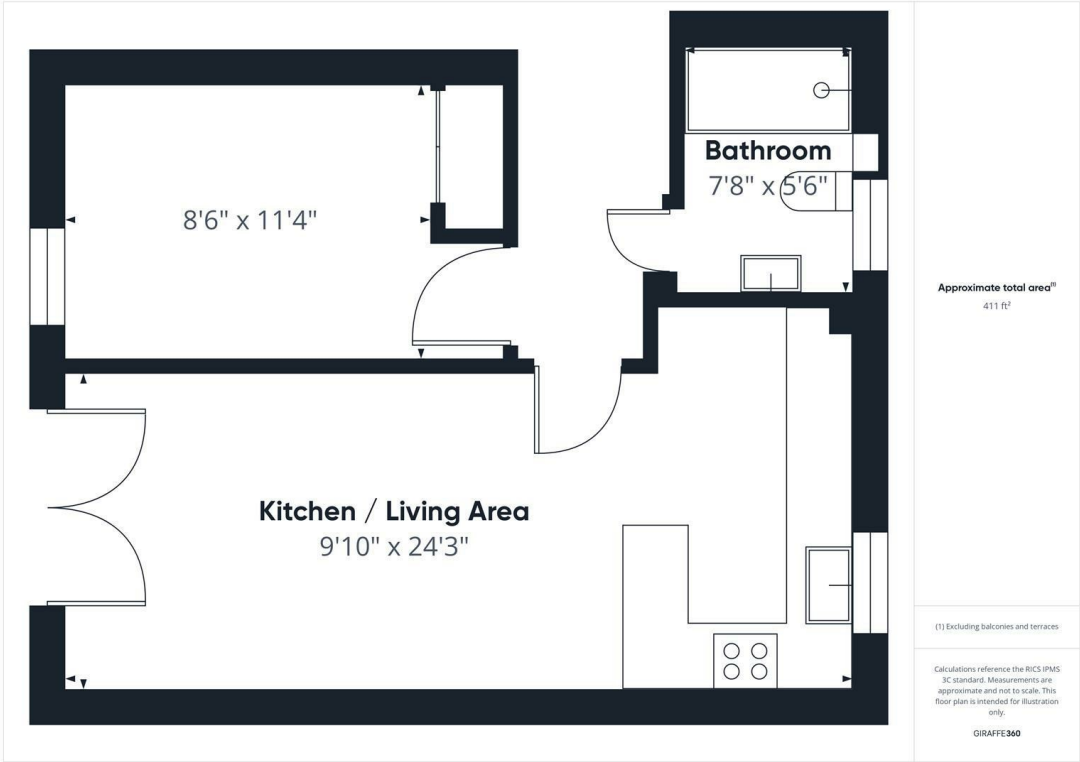




Carmichael Close, Ruislip, HA4 6LG
£1,595

This NEWLY REFURBISHED one-bedroom apartment in Ruislip Gardens offers stylish, modern living with exceptional transport links. Finished to a high standard, the property features a bright open-plan living area, a spacious double bedroom, and a sleek, contemporary bathroom. The fully fitted kitchen comes with integrated appliances, providing a clean and seamless finish ideal for modern living. Ideally located just a short walk from Ruislip Gardens Station on the Central Line, it offers quick and direct access to Central London, while the nearby A40 ensures convenient road links to West London and the Home Counties. With local shops, parks, and amenities close by, this apartment is perfect for professionals or couples looking for a modern home in a well-connected neighbourhood.



Energy Efficiency Rating		
	Current	Potential
Very energy efficient - lower running costs		
(92 plus) A		
(81-91) B		
(69-80) C		
(55-68) D		
(39-54) E		
(21-38) F		
(1-20) G		
Not energy efficient - higher running costs		
England & Wales	EU Directive 2002/91/EC	

You may download, store and use the material for your own personal use and research. You may not republish, retransmit, redistribute or otherwise make the material available to any party or make the same available on any website. These particulars, whilst believed to be accurate are set out as a general outline only for guidance and do not constitute any part of an offer or contract. Intending purchasers should not rely on them as statements or representation of fact, but must satisfy themselves by inspection or otherwise as to their accuracy. No person in this firms employment has the authority to make or give any representation or warranty in respect of the property.